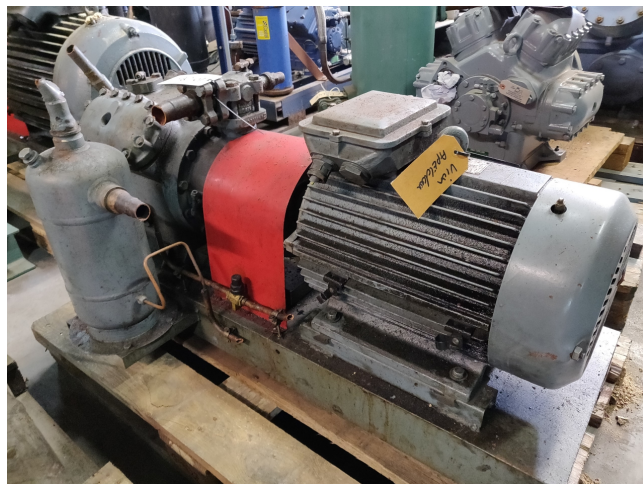


DWM 4CC 63

Specifications

Brand	DWM
Type	4CC 63
Refrigerant	Freon
Electromotor Specs	15 kW at 1445 RPM
Sizes	1200x650x600 mm (LxWxH)
Stock	1



Description

Used DWM 4CC 63

Used, DWM 4CC 63 open type reciprocating compressor with Electromotor 15 kW at 1445 RPM. You can also use this compressor on alternative types of Freon. For all the other specs (if available), see the picture of the manufacturer model plate or the attached pdf file. *Why choose for HOSBV? Were not only the largest used refrigeration specialist in Europe, but also, we deliver all equipment including an extensive test, warranty and industrial cleaning. *Optional we can also perform a new paint job and arrange the logistics.

